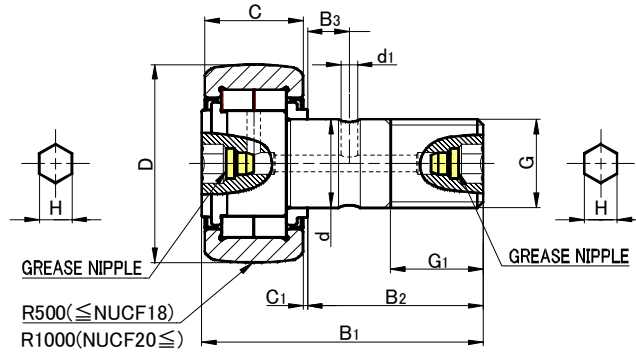


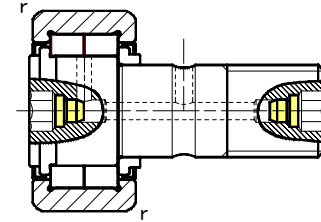
## Heavy Duty Type Cam Followers



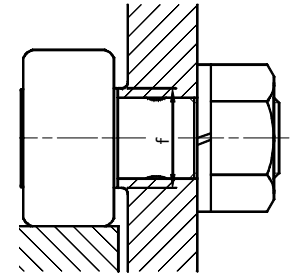
NUCF TYPE



NUCF...RAB



NUCF...AB



Stud diameter	Designation				Dimensions (mm)											Max tightening torque	Basic dynamic load rating	Basic static load rating	Track load capacity		Limiting speed	Weight	
					D	C	Thread G	G <sub>1</sub>	B <sub>1</sub>	B <sub>2</sub>	B <sub>3</sub>	C <sub>1</sub>	d <sub>1</sub>	H	r min.				f	N.m			C <sub>r</sub> N
16	NUCF 16	RAB	NUCF 16	AB	35	18	M16x1.5	17	52	32.5	7.8	0.8	3	6	0.6	20	58	23400	27200	3140	11200	5200	167
18	NUCF 18	RAB	NUCF 18	AB	40	20	M18x1.5	19	58	36.5	8	0.8	3	6	1	22	87	25200	30900	3720	14400	4700	248
20	NUCF 20	RAB	NUCF 20	AB	52	24	M20x1.5	21	66	40.5	9	0.8	4	8	1	31	120	43000	58100	8230	23200	3300	461
20	NUCF 20-1	RAB	NUCF 20-1	AB	47	24	M20x1.5	21	66	40.5	9	0.8	4	8	1	27	120	38900	48900	7150	21000	3800	390
24	NUCF 24	RAB	NUCF 24	AB	62	28	M24x1.5	25	80	49.5	11	1.3	4	8	1	38	220	57600	74300	10500	32000	2800	789
24	NUCF 24-1	RAB	NUCF 24-1	AB	72	28	M24x1.5	25	80	49.5	11	1.3	4	8	1.1	44	220	63300	87500	12900	37200	2300	1020
30	NUCF 30	RAB	NUCF 30	AB	80	35	M30x1.5	32	100	63	15	1	4	8	1.1	47	450	94800	135700	14900	52600	2100	1630
30	NUCF 30-2	RAB	NUCF 30-2	AB	90	35	M30x1.5	32	100	63	15	1	4	8	1.1	47	450	94800	135700	17300	59300	2100	1990