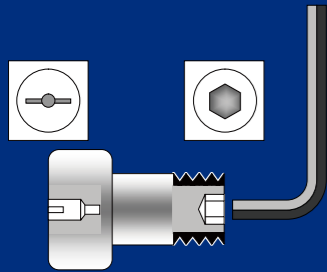


# CAM FOLLOWERS

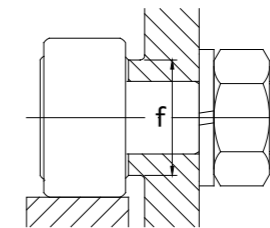
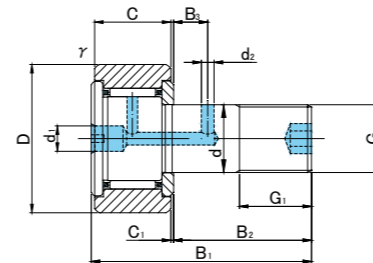
HEXAGON SOCKET ON THREAD SIDE  
SCREWDRIVER SLOT HEAD



CF..B



CF..VB



## CF..B TYPE

Prepacked Grease

Stud diameter (mm)	h7 tolerance	Designation				Dimensions (mm)														Basic dynamic load rating Cr N	Basic static load rating Cor N	Largest permissible load N	Limiting speed * rpm	Track load capacity		Max tightening torque N·m	Mass g (approx)	
		Cylindrical outer ring		Crowned outer ring R500(CF12 ~ CF18) R1000(CF20 ≤)		D	C	d	G	G1	B1	B2	B3	C1	d1	d2	H	rs min	f min					Cylindrical outer ring N	Crowned outer ring N			
		Without seals	With seals	Without seals	With seals																							
12	0 -0.018	CF12B	CF12UUB	CF12RB	CF12UURB	30	14	12	M12×1.5	13	40	25		6	0.6	6	3	6	0.6	20	7 940	9 800	9 800	14 000	7 060	2 450	22	95
		CF12VB	CF12VUUB	CF12VRB	CF12VUURB																13 430	19 700	11 270	6 000				
12	0 -0.018	CF12-1B	CF12-1UUB	CF12-1RB	CF12-1UURB	32	14	12	M12×1.5	13	40	25		6	0.6	6	3	6	0.6	20	7 940	9 800	9 800	14 000	7 450	2 740	22	105
		CF12-1VB	CF12-1VUUB	CF12-1VRB	CF12-1VUURB																13 430	19 700	11 270	6 000				
16	0 -0.018	CF16B	CF16UUB	CF16RB	CF16UURB	35	18	16	M16×1.5	17	52	32.5		8	0.8	6	3	6	0.6	24	12 050	18 330	18 330	10 000	11 200	3 140	58	170
		CF16VB	CF16VUUB	CF16VRB	CF16VUURB																20 680	37 630	19 800	4 500				
18	0 -0.018	CF18B	CF18UUB	CF18RB	CF18UURB	40	20	18	M18×1.5	19	58	36.5		8	0.8	6	3	6	1	26	14 700	25 200	25 200	8 500	14 400	3 720	87	250
		CF18VB	CF18VUUB	CF18VRB	CF18VUURB																25 280	51 350	26 560	3 500				
20	0 -0.021	CF20B	CF20UUB	CF20RB	CF20UURB	52	24	20	M20×1.5	21	66	40.5		9	0.8	8	4	8	1	36	20 680	34 600	32 140	7 000	23 200	8 230	120	460
		CF20VB	CF20VUUB	CF20VRB	CF20VUURB																33 120	64 480	32 140	3 500				
20	0 -0.021	CF20-1B	CF20-1UUB	CF20-1RB	CF20-1UURB	47	24	20	M20×1.5	21	66	40.5		9	0.8	8	4	8	1	36	20 680	34 600	32 140	7 000	21 000	7 150	120	385
		CF20-1VB	CF20-1VUUB	CF20-1VRB	CF20-1VUURB																33 120	64 480	32 140	3 500				
24	0 -0.021	CF24B	CF24UUB	CF24RB	CF24UURB	62	29	24	M24×1.5	25	80	49.5		11	0.8	8	4	8	1	40	30 480	52 630	49 500	6 500	34 200	10 500	220	815
		CF24VB	CF24VUUB	CF24VRB	CF24VUURB																46 550	92 020	49 500	3 000				
24	0 -0.021	CF24-1B	CF24-1UUB	CF24-1RB	CF24-1UURB	72	29	24	M24×1.5	25	80	49.5		11	0.8	8	4	8	1	40	30 480	52 630	49 500	6 500	39 800	12 900	220	1 140
		CF24-1VB	CF24-1VUUB	CF24-1VRB	CF24-1VUURB																46 550	92 020	49 500	3 000				
30	0 -0.021	CF30B	CF30UUB	CF30RB	CF30UURB	80	35	30	M30×1.5	32	100	63		15	1	8	4	8	1	46	45 370	85 060	73 700	5 000	52 600	14 900	450	1 870
		CF30VB	CF30VUUB	CF30VRB	CF30VUURB																67 620	144 060	73 700	2 200				
30	0 -0.021	CF30-1B	CF30-1UUB	CF30-1RB	CF30-1UURB	85	35	30	M30×1.5	32	100	63		15	1	8	4	8	1	46	45 370	85 060	73 700	5 000	56 000	16 100	450	2 030
		CF30-1VB	CF30-1VUUB	CF30-1VRB	CF30-1VUURB																67 620	144 060	73 700	2 200				
30	0 -0.021	CF30-2B	CF30-2UUB	CF30-2RB	CF30-2UURB	90	35	30	M30×1.5	32	100	63		15	1	8	4	8	1	46	45 370	85 060	73 700	5 000	59 300	17 300	450	2 220
		CF30-2VB	CF30-2VUUB	CF30-2VRB	CF30-2VUURB																67 620	144 060	73 700	2 200				

\* Without seals, suitable for grease lubrication. In case of oil lubrication, up to 130% of this value shall be permissible, and 70% of this value shall apply for types with seals.

### OUTER RINGS TOLERANCE (μm)

TYPE	Cylindrical outer ring	Crowned outer ring
CF12	0/-9	0/-50
CF12-1,CF16,CF18,CF20-1	0/-11	0/-50
CF20,CF24,CF24-1,CF30	0/-13	0/-50
CF30-1,CF30-2	0/-15	0/-50

### ACCESSORIES

TYPE	STOP PLUG	RESIN PLUG	NUT
CF3/CF4/CF5	—	—	Attached
CF6/CF8/CF10/CF10-1	—	—	Attached
CF12/CF12-1/CF16/CF18	φ 6 Attached	φ 6 Attached	Attached
CF20/CF20-1/CF24/CF24-1/CF30/CF30-1/CF30-2	φ 8 Attached	φ 8 Attached	Attached