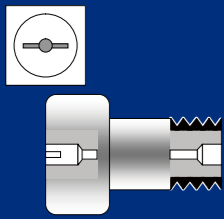


CAM FOLLOWERS

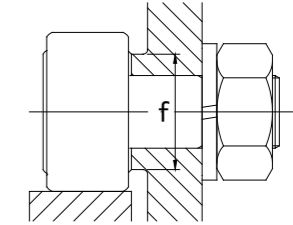
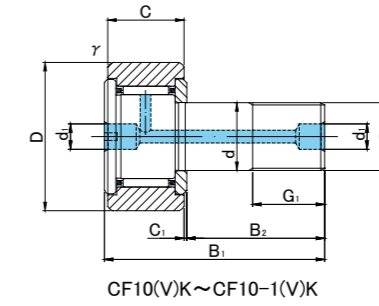
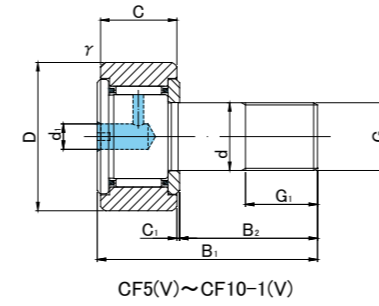
SCREWDRIVER SLOT HEAD



CF



CF.V



CF TYPE

Prepacked Grease

Stud diameter (mm)	Designation				Dimensions (mm)														Basic dynamic load rating	Basic static load rating	Largest permissible load	Limiting speed *	Track load capacity		Max tightening torque	Mass					
	Cylindrical outer ring		Crowned outer ring R250(CF5) R500(CF6 ~ CF10-1)		D	C	d	G	G1	B1	B2	B3	C1	d1	d2	r _s min	f min	Cr N					Cor N	N			rpm	Cylindrical outer ring N	Crowned outer ring N	N·m	g (approx)
	Without seals	With seals	Without seals	With seals																											
5	0 -0.012	CF 5	CF 5UU	CF 5R	CF 5UUR	13	9	5	M5×0.8	7.5	23	13	—	0.5	3.1	—	0.3	9.7	3 140	2 770	1 420	29 000	2 250	780	2	10.5					
		CF 5V	CF 5VUU	CF 5VR	CF 5VUUR														5 100	5 500	1 420	11 600									
6	0 -0.012	CF 6	CF 6UU	CF 6R	CF 6UUR	16	11	6	M6×1	8	28	16	—	0.6	4	—	0.3	11	3 630	3 630	2 110	25 000	3 430	1 080	3	18.5					
		CF 6V	CF 6VUU	CF 6VR	CF 6VUUR														6 960	8 530	2 110	12 000									
8	0 -0.015	CF 8	CF 8UU	CF 8R	CF 8UUR	19	11	8	M8×1.25	10	32	20	—	0.6	4	—	0.3	13	4 310	4 710	4 710	20 000	4 020	1 370	8	28.5					
		CF 8V	CF 8VUU	CF 8VR	CF 8VUUR														8 130	11 170	4 710	9 000									
10	0 -0.015	CF10	CF10UU	CF10R	CF10UUR	22	12	10	M10×1.25	12	36	23	—	0.6	4	—	0.3	15	5 390	6 860	6 860	17 000	4 700	1 670	15	45					
		CF10V	CF10VUU	CF10VR	CF10VUUR														9 510	14 500	7 450	7 500									
10	0 -0.015	CF10-1	CF10-1UU	CF10-1R	CF10-1UUR	26	12	10	M10×1.25	12	36	23	—	0.6	4	—	0.3	15	5 390	6 860	6 860	17 000	5 490	2 060	15	60					
		CF10-1V	CF10-1VUU	CF10-1VR	CF10-1VUUR														9 510	14 500	7 450	7 500									
10	0 -0.015	CF10K	CF10UUK	CF10RK	CF10UURK	22	12	10	M10×1	12	36	23	—	0.6	4	—	0.3	15	5 390	6 860	6 860	17 000	4 700	1 670	15	45					
		CF10VK	CF10VUUK	CF10VRK	CF10VUURK														9 510	14 500	7 450	7 500									
10	0 -0.015	CF10-1K	CF10-1UUK	CF10-1RK	CF10-1UURK	26	12	10	M10×1	12	36	23	—	0.6	4	—	0.3	15	5 390	6 860	6 860	17 000	5 490	2 060	15	60					
		CF10-1VK	CF10-1VUUK	CF10-1VRK	CF10-1VUURK														9 510	14 500	7 450	7 500									

* Without seals, suitable for grease lubrication. In case of oil lubrication, up to 130% of this value shall be permissible, and 70% of this value shall apply for types with seals.

OUTER RINGS TOLERANCE

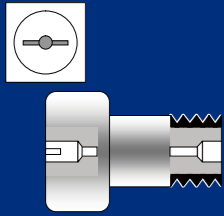
TYPE	Cylindrical outer ring	Crowned outer ring
CF5,CF6	0/-8	0/-50
CF8,CF10,CF10-1,CF12	0/-9	0/-50
CF12-1,CF16,CF18,CF20-1	0/-11	0/-50
CF20,CF24,CF24-1,CF30	0/-13	0/-50
CF30-1,CF30-2	0/-15	0/-50

ACCESSORIES

TYPE	STOP PLUG	RESIN PLUG	NUT
CF5	—	—	Attached
CF6/CF8/CF10/CF10-1	—	φ 4 Attached	Attached
CF12/CF12-1/CF16/CF18	φ 6 Attached	φ 6 Attached	Attached
CF20/CF20-1/CF24/CF24-1/CF30/CF30-1/CF30-2	φ 8 Attached	φ 8 Attached	Attached

CAM FOLLOWERS

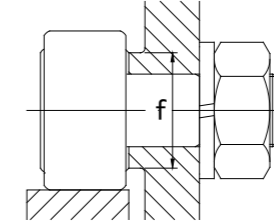
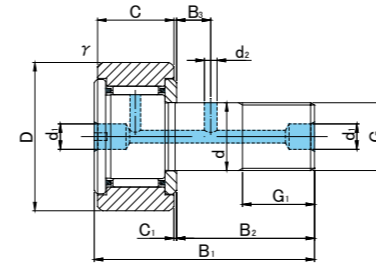
SCREWDRIVER SLOT HEAD



CF



CF.V



CF TYPE

Prepacked Grease

Stud diameter (mm)	h7 tolerance	Designation				Dimensions (mm)														Basic dynamic load rating	Basic static load rating	Largest permissible load	Limiting speed *	Track load capacity		Max tightening torque	Mass					
		Cylindrical outer ring		Crowned outer ring R500(CF12 ~ CF18) R1000(CF20 ≤)		D	C	d	G	G1	B1	B2	B3	C1	d1	d2	r/min	f min	Cr N					Cor N	N			rpm	Cylindrical outer ring N	Crowned outer ring N	N·m	g (approx)
		Without seals	With seals	Without seals	With seals																											
12	0 -0.018	CF12	CF12UU	CF12R	CF12UUR	30	14	12	M12×1.5	13	40	25	6	0.6	6	3	0.6	20	7 940	9 800	9 800	14 000	7 060	2 450	22	95						
		CF12V	CF12VUU	CF12VR	CF12VUUR																											
12	0 -0.018	CF12-1	CF12-1UU	CF12-1R	CF12-1UUR	32	14	12	M12×1.5	13	40	25	6	0.6	6	3	0.6	20	7 940	9 800	9 800	14 000	7 450	2 740	22	105						
		CF12-1V	CF12-1VUU	CF12-1VR	CF12-1VUUR																											
16	0 -0.018	CF16	CF16UU	CF16R	CF16UUR	35	18	16	M16×1.5	17	52	32.5	8	0.8	6	3	0.6	24	12 050	18 330	18 330	10 000	11 200	3 140	58	170						
		CF16V	CF16VUU	CF16VR	CF16VUUR																											
18	0 -0.018	CF18	CF18UU	CF18R	CF18UUR	40	20	18	M18×1.5	19	58	36.5	8	0.8	6	3	1	26	14 700	25 200	25 200	8 500	14 400	3 720	87	250						
		CF18V	CF18VUU	CF18VR	CF18VUUR																											
20	0 -0.021	CF20	CF20UU	CF20R	CF20UUR	52	24	20	M20×1.5	21	66	40.5	9	0.8	8	4	1	36	20 680	34 600	32 140	7 000	23 200	8 230	120	460						
		CF20V	CF20VUU	CF20VR	CF20VUUR																											
20	0 -0.021	CF20-1	CF20-1UU	CF20-1R	CF20-1UUR	47	24	20	M20×1.5	21	66	40.5	9	0.8	8	4	1	36	20 680	34 600	32 140	7 000	21 000	7 150	120	385						
		CF20-1V	CF20-1VUU	CF20-1VR	CF20-1VUUR																											
24	0 -0.021	CF24	CF24UU	CF24R	CF24UUR	62	29	24	M24×1.5	25	80	49.5	11	0.8	8	4	1	40	30 480	52 630	49 500	6 500	34 200	10 500	220	815						
		CF24V	CF24VUU	CF24VR	CF24VUUR																											
24	0 -0.021	CF24-1	CF24-1UU	CF24-1R	CF24-1UUR	72	29	24	M24×1.5	25	80	49.5	11	0.8	8	4	1	40	30 480	52 630	49 500	6 500	39 800	12 900	220	1 140						
		CF24-1V	CF24-1VUU	CF24-1VR	CF24-1VUUR																											
30	0 -0.021	CF30	CF30UU	CF30R	CF30UUR	80	35	30	M30×1.5	32	100	63	15	1	8	4	1	46	45 370	85 060	73 700	5 000	52 600	14 900	450	1 870						
		CF30V	CF30VUU	CF30VR	CF30VUUR																											
30	0 -0.021	CF30-1	CF30-1UU	CF30-1R	CF30-1UUR	85	35	30	M30×1.5	32	100	63	15	1	8	4	1	46	45 370	85 060	73 700	5 000	56 000	16 100	450	2 030						
		CF30-1V	CF30-1VUU	CF30-1VR	CF30-1VUUR																											
30	0 -0.021	CF30-2	CF30-2UU	CF30-2R	CF30-2UUR	90	35	30	M30×1.5	32	100	63	15	1	8	4	1	46	45 370	85 060	73 700	5 000	59 300	17 300	450	2 220						
		CF30-2V	CF30-2VUU	CF30-2VR	CF30-2VUUR																											

* Without seals, suitable for grease lubrication. In case of oil lubrication, up to 130% of this value shall be permissible, and 70% of this value shall apply for types with seals.

OUTER RINGS TOLERANCE

TYPE	Cylindrical outer ring	Crowned outer ring
CF5,CF6	0/-8	0/-50
CF8,CF10,CF10-1,CF12	0/-9	0/-50
CF12-1,CF16,CF18,CF20-1	0/-11	0/-50
CF20,CF24,CF24-1,CF30	0/-13	0/-50
CF30-1,CF30-2	0/-15	0/-50

ACCESSORIES

TYPE	STOP PLUG	RESIN PLUG	NUT
CF5	—	—	Attached
CF6/CF8/CF10/CF10-1	—	φ 4 Attached	Attached
CF12/CF12-1/CF16/CF18	φ 6 Attached	φ 6 Attached	Attached
CF20/CF20-1/CF24/CF24-1/CF30/CF30-1/CF30-2	φ 8 Attached	φ 8 Attached	Attached